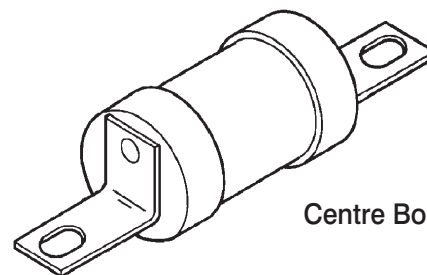
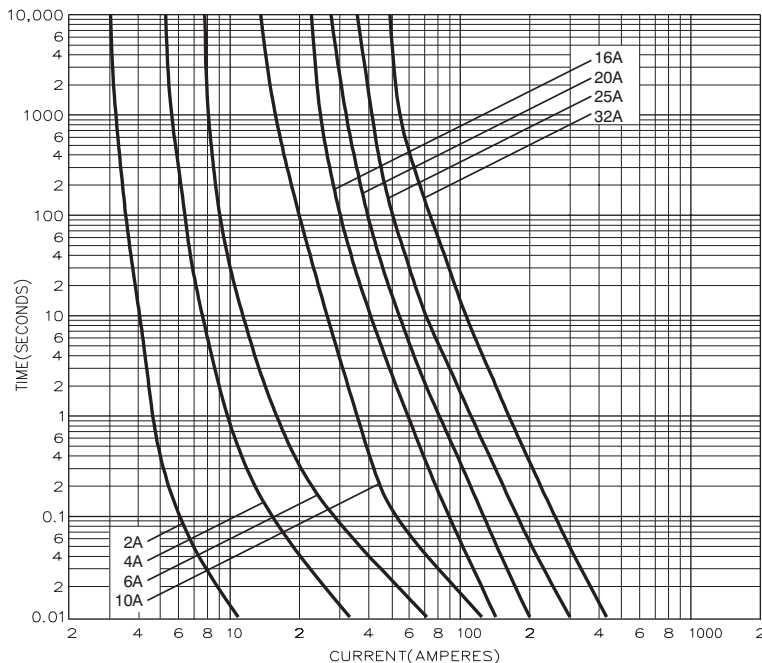


BS88, IEC269 Industrial HRC Fuse Links

Centre Bolted Tags 550V ac 250V dc 2 - 32 Amps

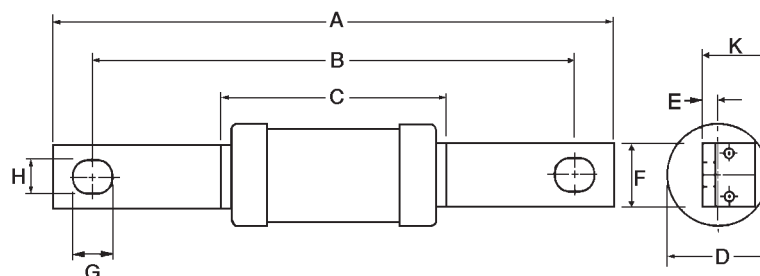
AD

Time-Current Characteristic Curves Non Motor Rated



Centre Bolted Tag

Dimensional Data



Catalog Number	I ² t (Amps ² Seconds)			Nom. Watts Loss	Rated Voltage	Dimensions (mm)								
	Amp Ratings	Pre-Arcing	Total at 415V			A	B	C	D	E	F	G	H	K
AD2	2	1.2	3.1	1.2	550 ac	128.5	111.5	55.0	21.0	1.4	14.2	11.8	8.7	11.2
AD4	4	11	31	1.4										
AD6	6	32	90	1.8										
AD10	10	20	60	2.4										
AD16	16	85	240	2.9										
AD20	20	220	580	3.1										
AD25	25	500	1400	3.2										
AD32	32	1000	2760	3.5										

Packaging - 20 per carton

This bulletin is intended to clearly present comprehensive product data and provide technical information that will help the end user with design applications. Bussmann reserves the right, without notice, to change design or construction of any products and to discontinue or limit distribution of any products. Bussmann also reserves the right to change or update, without notice, any technical information contained in this bulletin. Once a product has been selected, it should be tested by the user in all possible applications.

Bussmann Division
Cooper (U.K.) Ltd
 Burton-on-the-Wolds
 Leicestershire, LE12 5TH
 United Kingdom
 Tel: (44) (0)1509 88 27 37
 Fax: (44) (0)1509 88 27 86

Head Office
 St. Louis, MO, U.S.A. Tel: (314) 527-3877 Fax: (800) 544-2570 International Fax: (314) 527-1445



Bussmann Information Fax (00 1) 314 527 1450
 Bussmann WEB site - <http://www.bussmann.com>

A **COOPER** Industries Company