

## 15288 Series

Disconnect Terminal Blocks  
for DIN Rail Mount

### SPECIFICATIONS

**Rating:** 65A, 600V\*

**Center Spacing:** .54" (13.7 mm)

**Wire Range:** #6-16 AWG

**Screw Size:** #8-32 zinc plated phillslot

**Number of Poles:** 3 pole only

**Mounting:** 35mm DIN Rail

Optional End Stop NDNAS (shown on pg. 4)

**Materials:** Molded Base: UL rated 94V-2 thermoplastic.

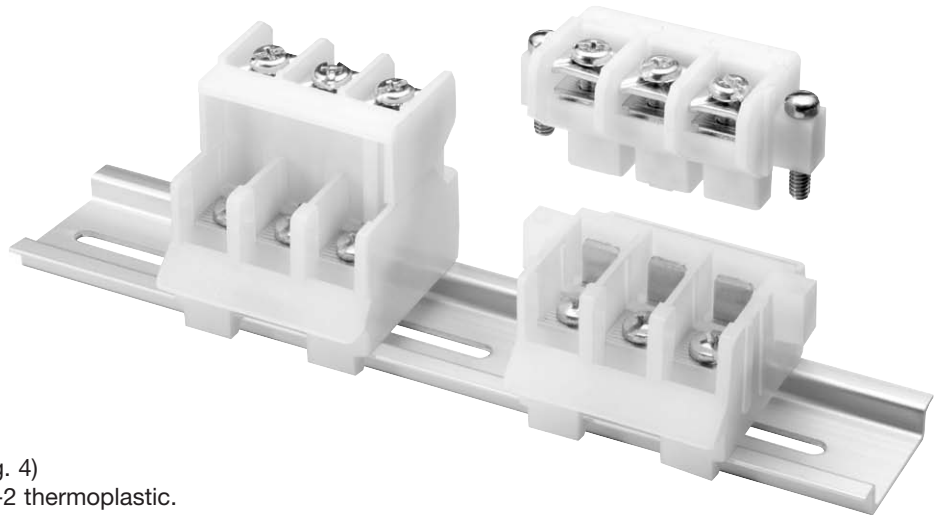
Tin plated copper alloy contacts.

**Torque Rating:** 20 in-lb (30 in-lb for 8AWG bare wire)

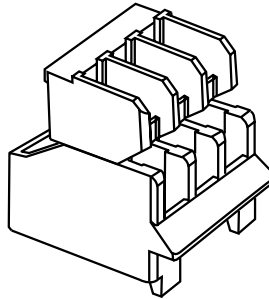
**Operating Temperature:** 105°C (221°F)

**Agency Information:** UL/CSA E62622; CE Certified

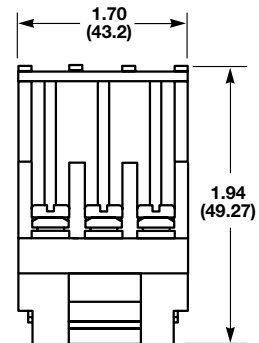
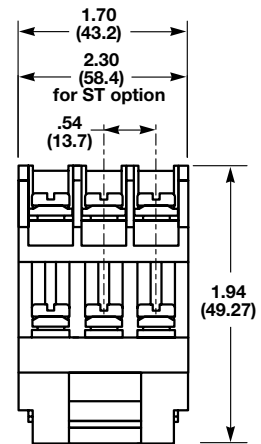
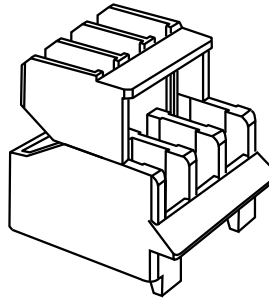
\*CSA rating achieved with #6AWG wire crimped to ring terminal 50A without.



REVERSE WIRING DIRECTION



IN-LINE WIRING DIRECTION



## Part Numbering System

Series

1 5 2 8 8

Wiring

□ □

blank - inline  
R - reverse

Options

□ □

S - snap  
ST - screw together  
SS - solid din rail snap