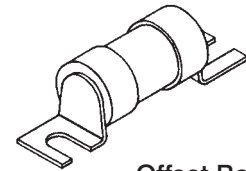
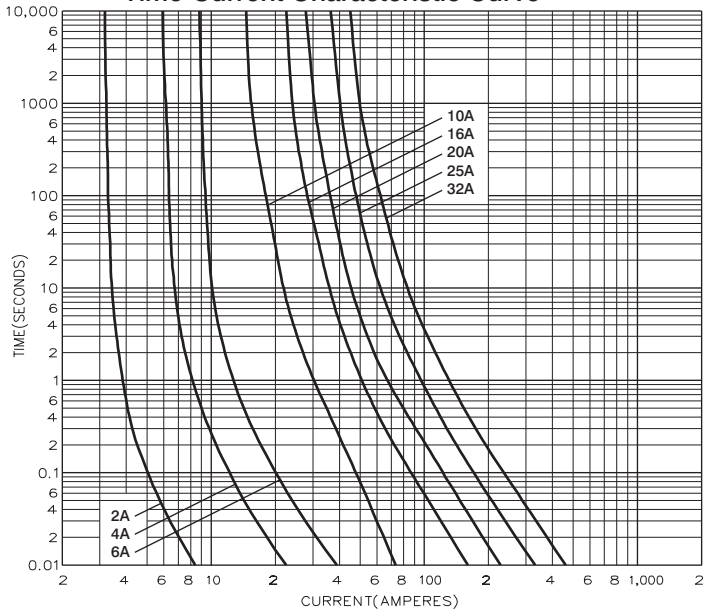


# BS88, IEC269 Industrial HRC Fuse Links

# STD

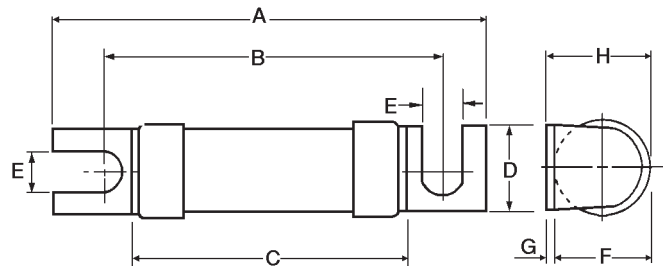
Offset Bolted Tags 240V ac

Time-Current Characteristic Curve



Offset Bolted Tag

Dimensional Data



Catalog Number	I <sup>2</sup> t (Ampere <sup>2</sup> Seconds)			Nom. Watts Loss	Rated Voltage	Dimensions (inches/mm)							
	Amp Ratings	Pre-Arcing	Total at 240V			A	B	C	D	E	F	G	H
STD2	2	0.8	1	0.5	240 ac	1.85 47.0	1.50 35.0	1.0 24.0	0.44 11.0	0.16 4.7	0.50 12.0	0.03 0.8	0.56 13.0
STD4	4	5.5	8	1.0									
STD6	6	15	22	1.6									
STD10	10	28	42	1.2									
STD16	16	160	250	1.5									
STD20	20	290	450	1.7									
STD25	25	800	1300	1.8									
STD32	32	1600	2500	2.4									

Packaging - 20 per carton

This bulletin is intended to clearly present comprehensive product data and provide technical information that will help the end user with design applications. Bussmann reserves the right, without notice, to change design or construction of any products and to discontinue or limit distribution of any products. Bussmann also reserves the right to change or update, without notice, any technical information contained in this bulletin. Once a product has been selected, it should be tested by the user in all possible applications.



**Bussmann Division**  
**Cooper (U.K.) Ltd**  
 Burton-on-the-Wolds  
 Leicestershire, LE12 5TH  
 United Kingdom  
 Tel: (44) (0)1509 88 27 37  
 Fax: (44) (0)1509 88 27 86

Head Office  
 St. Louis, MO, U.S.A. Tel: (314) 527-3877 Fax: (800) 544-2570 International Fax: (314) 527-1445



Bussmann Information Fax (00 1) 314 527 1450