

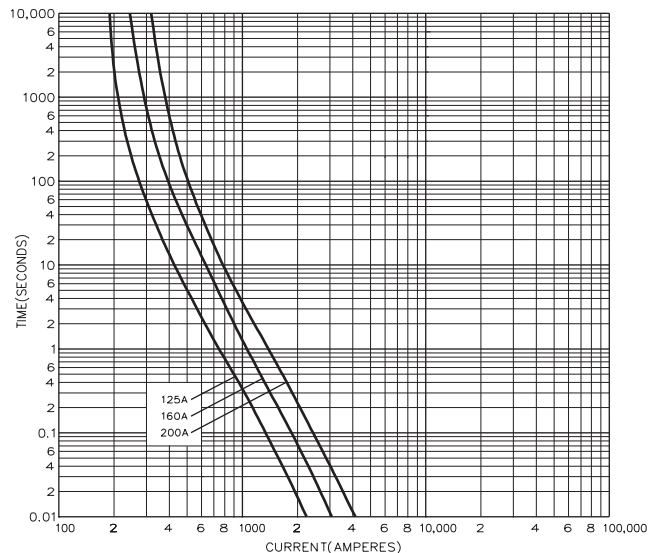
# BS88, IEC269 Industrial HRC Fuse Links

## Centre Bolted Tags 415V ac 125-200 Amps

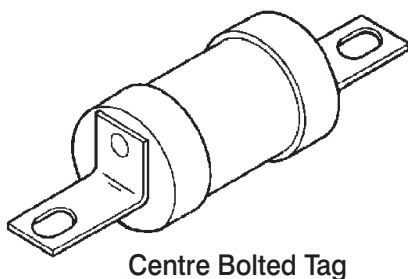
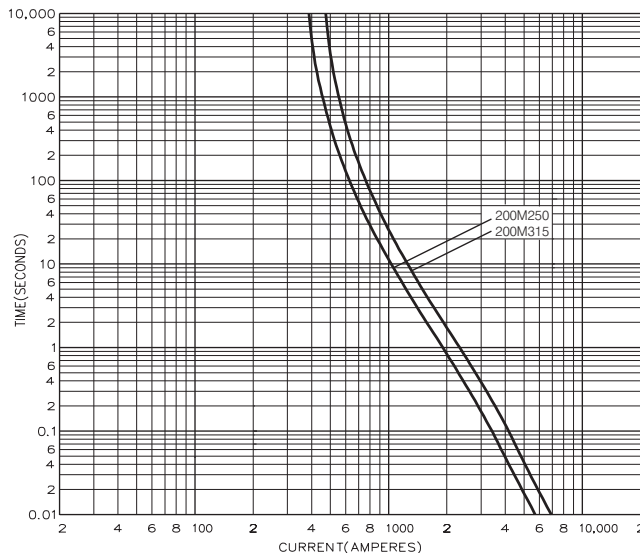
DD

### Time-Current Characteristic Curves

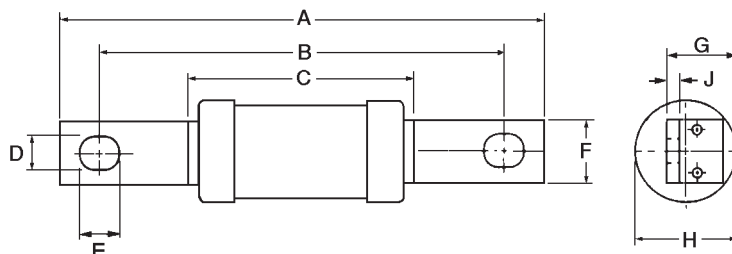
#### Non Motor Rated



#### Motor Rated



#### Dimensional Data



Catalog' Number	I <sup>2</sup> t (Amps <sup>2</sup> Seconds x 10 <sup>3</sup> )			Nom. Watts Loss	Rated Voltage	Dimensions (mm)								
	Amp Ratings	Pre-Arcing	Total at 415V			A	B	C	D	E	F	G	H	J
DD125	125	29.5	71	11	415 ac	136.0	110.0	47.0	9.0	12.5	19.0	22.5	31.0	3.2
DD160	160	57	135	13										
DD200	200	120	290	14										
DD200M250	200M250	200	480	11										
DD200M315	200M315	265	635	9										

Packaging - 5 per carton

This bulletin is intended to clearly present product data and provide technical information that will help the end user with design applications. If there is any data which is not covered here, then please contact our Application Engineers at Bussmann, Burton, UK. Bussmann reserves the right, without notice, to change design or construction of any products and to discontinue or limit distribution of any products. Bussmann also reserves the right to change or update, without notice, any technical information contained in this bulletin. Once a product has been selected, it should be tested by the user in all possible applications.

**Bussmann Division**  
**Cooper (U.K.) Ltd**  
 Burton-on-the-Wolds  
 Leicestershire, LE12 5TH  
 United Kingdom  
 Tel: (44) (0)1509 88 27 37  
 Fax: (44) (0)1509 88 27 86

Head Office  
 St. Louis, MO, U.S.A. Tel: (314) 527-3877 Fax: (800) 544-2570 International Fax: (314) 527-1445



Bussmann Information Fax (00 1) 314 527 1450  
 Bussmann WEB site - <http://www.bussmann.com>

A **COOPER** Industries Company