

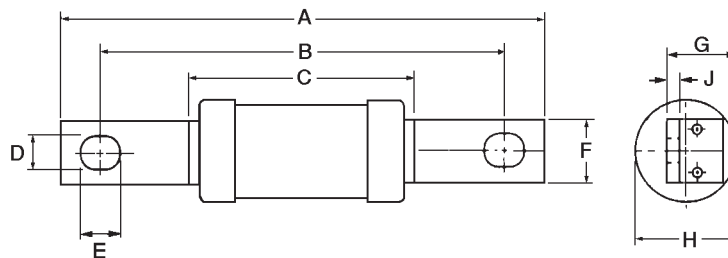
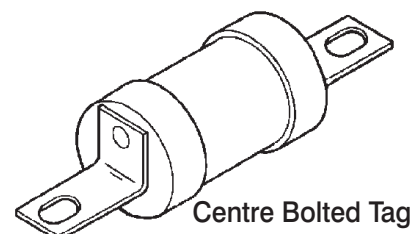
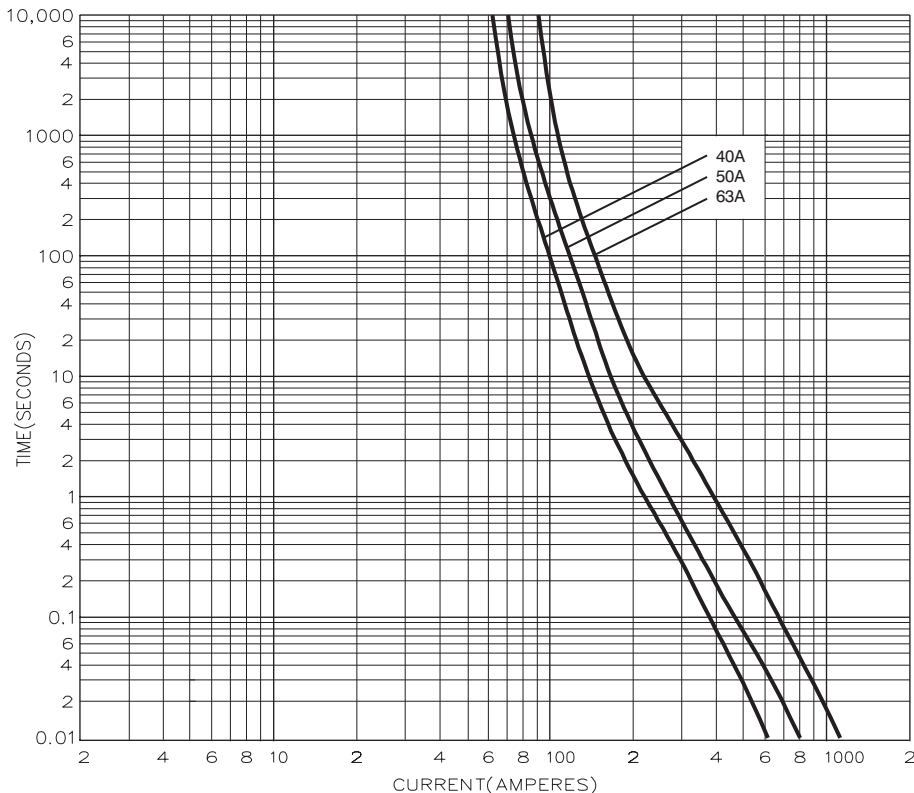
# BS88, IEC269 Industrial HRC Fuse Links

Centre Bolted Tags 550V ac 250V dc

**BD**

## Time-Current Characteristic Curves

Non Motor Rated



Catalog' Number	I <sup>2</sup> t (Amps <sup>2</sup> Seconds)			Nom. Watts Loss	Rated Voltage	Dimensions (mm)								
	Amp Ratings	Pre-Arcing	Total at 415V			A	B	C	D	E	F	G	H	J
BD40	40	1400	3600	4.7	550 ac 250 dc	128.5	111.0	55.0	8.7	11.8	14.2	11.2	21.0	1.4
BD50	50	3000	8000	4.9										
BD63	63	6700	18,800	5.6										

Packaging - 20 per carton

This bulletin is intended to clearly present comprehensive product data and provide technical information that will help the end user with design applications. Bussmann reserves the right, without notice, to change design or construction of any products and to discontinue or limit distribution of any products. Bussmann also reserves the right to change or update, without notice, any technical information contained in this bulletin. Once a product has been selected, it should be tested by the user in all possible applications.

**Bussmann Division**  
**Cooper (U.K.) Ltd**  
 Burton-on-the-Wolds  
 Leicestershire, LE12 5TH  
 United Kingdom  
 Tel: (44) (0)1509 88 27 37  
 Fax: (44) (0)1509 88 27 86

Head Office  
 St. Louis, MO, U.S.A. Tel: (314) 527-3877 Fax: (800) 544-2570 International Fax: (314) 527-1445



Bussmann Information Fax (00 1) 314 527 1450  
 Bussmann WEB site - <http://www.bussmann.com>