

# Unenclosed Fused Switch 250 Amps Suitable for NH style Fuse Links

# BDNHP

Conforms to IEC 947

### Regulations and Standards

for NH style Fuse Links or equivalent size 1.  
VDE 0113, IEC204, IEC408  
VDE 0660, Part 107  
IEC 947-1 and 3 EN 60947-1 and 3

### Application

This new switch has been designed for use with NH type fuse links. BDNHP is a fully rated double break switch fuse. When the Switch Fuse is in the OFF position the fuse links are isolated on both sides.

These Switches are specifically designed for:

- Distribution Boards
- Switch Boards
- Load Centres
- Motor Control Centres
- Control Panels

as well as enclosed versions for remote distribution and isolation.

### Design Features

The new design incorporates all the features you would expect of a modern Switch Fuse, but because of its innovative design it is very flexible in its application.

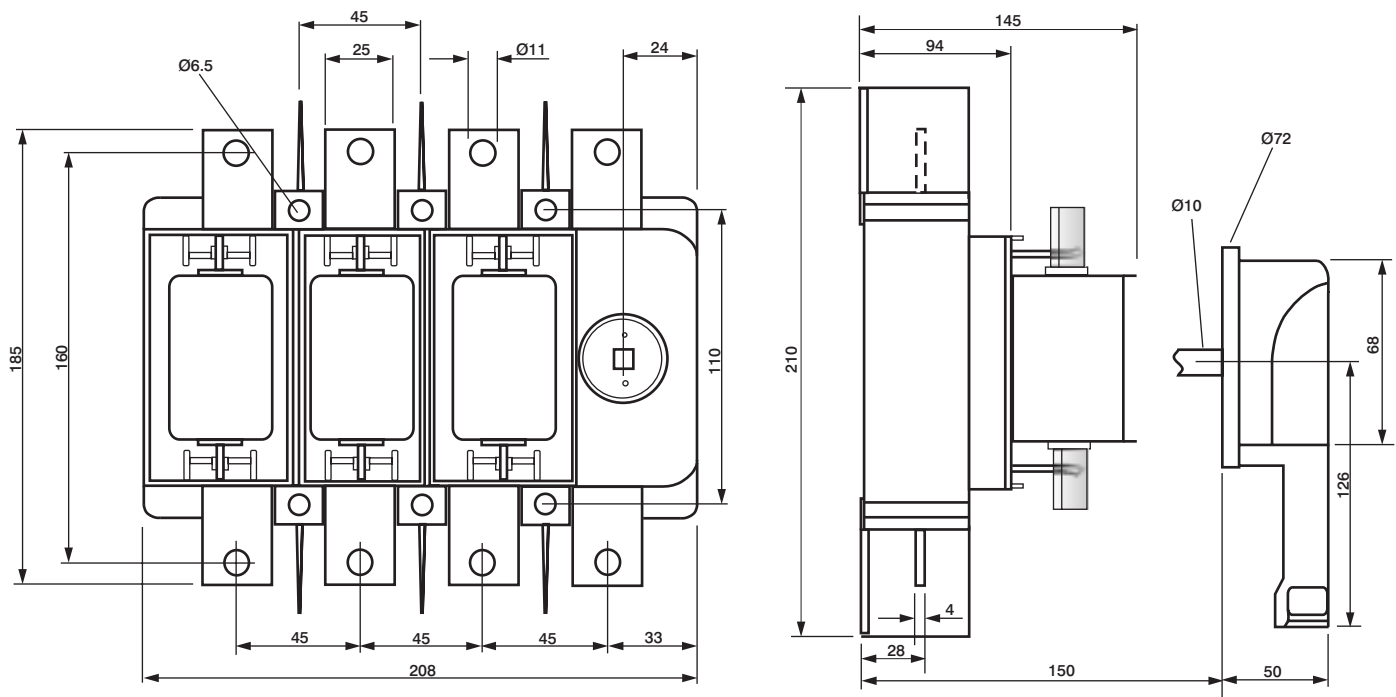
### Features include:

- Wide lug terminals
- Visible contacts
- High breaking capacity
- Compact footprint
- Easy fuse fitting
- IP20 shrouding
- Auxiliary contacts or neutral link.

### Accessories

A range of accessories including Auxiliary Contacts, Extension Shafts, Neutral Links, Red/Yellow Handles are all available to order, but are not stocked.

Dimensional Information for 300 Amp rating (mm) (not to scale)



**Bussmann Division**  
Cooper (U.K.) Ltd  
Burton-on-the-Wolds  
Leicestershire, LE12 5TH  
United Kingdom  
Tel: (44) (0)1509 88 27 37  
Fax: (44) (0)1509 88 27 86

This bulletin is intended to clearly present comprehensive product data and provide technical information that will help the end user with design applications. Bussmann reserves the right, without notice, to change design or construction of any products and to discontinue or limit distribution of any products. Bussmann also reserves the right to change or update, without notice, any technical information contained in this bulletin. Once a product has been selected, it should be tested by the user in all possible applications.

**Head Office**  
St. Louis, MO, U.S.A. Tel: (314) 527-3877 Fax: (800) 544-2570 International Fax: (314) 527-1445



Bussmann Information Fax (00 1) 314 527 1450

# Unenclosed Fused Switch 250 Amps Suitable for NH style Fuse Links

# BDNHP

Conforms to IEC 947

### Characteristics for 250A

<b>Electrical</b>								
Rated current I <sub>e</sub> open	45 deg C	250A	Rated operational voltage	690V		Frequency	40 - 60Hz	
	55 deg C	250A	Rated insulation voltage	1000V				
enclosed	45 deg C	225A	Test insulation voltage	3500V				
	55 deg C	225A						
Operational current	415V	250A	Operational current	415V	250A	Operational current	415V	250A
AC21, cos φ 0,95	500V	250A	AC22, cos φ 0,65	500V	250A	AC23, cos φ 0,35	500V	250A
IEC947-3	690V	250A	IEC947-3	690V	250A	IEC947-3	690V	250A
Breaking capacity	415V	375A	Breaking capacity	415V	750A	Breaking capacity	415V	1500A
AC21, cos φ 0,95	500V	375A	AC22, cos φ 0,65	500V	750A	AC23, cos φ 0,35	500V	1500A
IEC947-3	690V	375A	IEC947-3	690V	750A	IEC947-3	690V	1500A
Operational power	415V	90kW	Short circuit making capacity (I <sub>s</sub> )	26kA		Rated short time current	12.0kA	
AC23, cos φ 0,35	500V	110kW	Rated fused S/C current RMS with max HRC fuse type gl	80kA		1 sec. RMS value		
	690V	110kW		315A				
DIN Fuse size 1			Electrical endurance	415V	1000 Ops	Electrical endurance	415V	600 Ops
			AC21, cos φ 0,95	500V	1000 Ops	AC23, cos φ 0,35	500V	600 Ops
			AC22, cos φ 0,65	690V	600 Ops		690V	Ops
<b>Mechanical</b>								
Mechanical Endurance	5 x 10 <sup>3</sup> Ops		Cable Size			Max. terminal torque	12.5 - 20 Nm	
			Max. cross section	150mm <sup>2</sup>		Max. lug width	31mm	
Type 3-pole			Type 3-pole+N					
Art.-No.	141030		Art.-No.	141031				
Net weight	2.0kg		Net weight	2.1kg				
Packed weight			Packed weight					
<b>Accessories</b>								
Terminal Shrouds:	191351		Additional extension shafts:	190502		Auxiliary Contacts: 191433 (2NO+2NC)		
Red/Yellow handle:	190372		(Standard shaft for depth up to 280mm)			& 191435 (4NO + 4NC)		